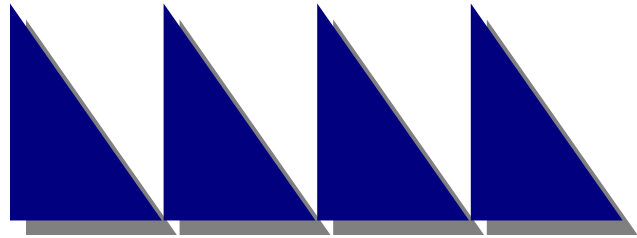




Lamar Dunn & Associates, Inc.



Newsletter - Volume X, Issue II

LD&A WELCOMES RICK SINCLAIR, Ph.D.



With the recent addition of Rick Sinclair into the LD&A family, LD&A has broadened their ability to assist clients both geographically, and in the area of service offerings. Mr. Sinclair is located at LD&A's newly formed Nashville office, and is able to provide instantaneous access to Tennessee's environmental central offices for LD&A's various clients. Mr. Sinclair brings LD&A over 30 years of regulatory experience. He most recently served as the Deputy Commissioner for the Tennessee Department of Environment and Conservation. His responsibilities included

oversight of the environmental regulatory and conservation programs within the State, as well as the State's parks and natural areas. Additionally, he negotiated with Environmental Protection Agency on behalf of TDEC. He is very familiar with all levels of the department, as well as the many areas within the EPA. Most recently, he has been instrumental in assisting LD&A's clients with various environmental issues. The employees of LD&A welcome Rick, and look forward to his contribution to LD&A's mission of providing practical solutions to the challenges of our clients.

HUNTSVILLE DAM RECEIVES EAST TENNESSEE DEVELOPMENT DISTRICT AWARD

The Huntsville Raw Water Impoundment (Dam) project recently received an award at the annual East Tennessee Development District meeting. The project includes excavation and placement of over 1.7 million cubic yards of material. Approximately half of the excavated material was utilized to construct the core of the dam. Based on projections of future water demands, the impoundment can provide raw water in sufficient quantity to serve the Huntsville Utility District's customers for a period of over 50 years. A unique feature of the project beyond the fact that a dam can be constructed today is the issue of water harvesting. For more information, contact LD&A.



LD&A PROJECTS/CLIENTS NEWS

CITY OF ALCOA

Lamar Dunn & Associates, Inc. has been authorized by the City of Alcoa to design a water main extension to serve as a back up feed to the Stock Creek Industrial Park in Blount County. The extension will begin at Alcoa's Lakemont Tank and cross the City of Maryville's wastewater treatment plant property, the Little River, the Norfolk Southern Railroad, and State Route 33 before connecting to the existing distribution piping at Stock Creek Industrial Park.

OLD MANCHESTER LOFTS

LD&A recently completed (design permitting documents) a crash project for Miller & Associates, Inc. in Richmond, Virginia. The project involves a historic brick and heavy timber 3-story existing wholesale distributorship building just across the river in downtown Richmond. The building is being renovated into a 4-story plus loft level condominium building with 80 units (just over 100,000 square feet). Although LD&A provided schematic design previously, our firm took the design to permitting document stage in four weeks.

LD&A SELECTED FOR AIRPORT FACILITY CONSULTING SERVICES

The Metropolitan Knoxville Airport Authority (MKAA) has recently selected Lamar Dunn & Associates, Inc. through a qualifications based selection (QBS) process as their mechanical engineering consultant. As consultant, LD&A will be assigned projects on a task basis relative to McGee-Tyson International

Airport and other facilities operated by MKAA. A task that has already been identified is the development of an Operation and Maintenance Program. Previously, LD&A has provided consultation and/or design services concerning the airport's indoor waterfalls, pump stations, and sanitary sewer system infiltration and inflow.

JOHNSON CITY FLOOD STUDY

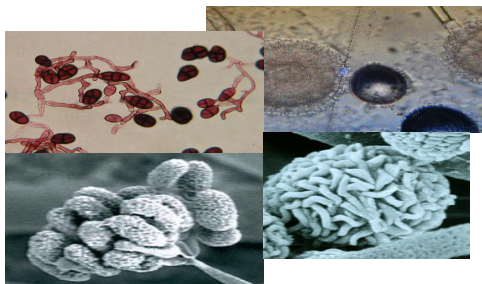
LD&A has completed the first phase of a multi-phase project to provide an understanding, and solution to the flooding problem that has historically plagued the downtown area. A dynamic hydraulic model (SWMM) was utilized to study the interrelation of multiple streams and the size of the drainage basins.



A DIFFERENT APPROACH TO MOLD AND MOISTURE CONCERNS

Lamar Dunn & Associates, Inc. has performed environmental air (and IAQ) sampling for much of our twenty plus year history. Over the more recent years, indoor mold concerns have become a greater concern to public health. Lamar Dunn & Associates, Inc. has consulted private residences, commercial businesses, and educational institutions on indoor air quality matters relating to moisture, mold, and ventilation problems. The lack of regulatory guidelines (and consistency) relative to acceptable levels of exposure has caused the remediation of mold to be out of control. Without established safe levels of concentration being identified, public reaction concerning the potential health risks can result in ill-informed decisions and in some cases, unwarranted alarm.

One of our recent projects involved a school, which had some evidence of mold and moisture problems at the beginning of the school year. We were called upon to provide guidance. There were several factors to consider in this case. The



indoor air quality was generally satisfactory based on similar facilities constructed in the same general time frame. Although some of the conditions observed were conducive to mold growth, the actual mold growth was isolated to a small portion of the school. Our first priority was protecting the public health. We recommended isolation of the small area. Secondly, we worked with the school representatives and consultants to provide a solution to the moisture problem. Moisture is required for mold growth; therefore, if moisture is controlled, so is mold. It was found that the insulation of the chilled water piping was not continuous (gaps existed). Maintenance personnel were able to mitigate some insulation gaps during overtime and irregular shifts. In lieu of shutting down the chilled water system and replacing insulation to accommodate the procedures developed by the school, we recommended modifying the process by which the chilled water system would be activated to accommodate the current insulation thickness. The changes were operational rather than construction activities. Health concerns were addressed, and the real source of problems was mitigated in a manner the school could manage. Another school (similar construction, similar level of moisture/mold) was recently shut down for months and remediated at a cost of more than ten times that of our project. Lamar Dunn & Associates, Inc. approaches these concerns from a slightly different perspective.

EMPLOYEE NEWS

Lamar Dunn Receives Presidential Citation

Lamar Dunn has received a citation in recognition of his efforts on behalf of the American Council of Engineering Companies of Tennessee and the engineering profession by Mark Askew the State President. He was honored for his many years of service and outstanding dedication to ACEC of Tennessee. The employees of LD&A congratulate Mr. Dunn on this honor.

Dr. Rick Sinclair speaks at a Regional Transportation Summit

The Nashville Area Chamber of Commerce sponsored a regional transportation summit at Belmont University on October 17, 2003. The televised event was attended by approximately 170 persons from a broad range of Tennessee businesses.

SEASON'S GREETINGS

The staff at Lamar Dunn & Associates, Inc. would like to wish everyone a Merry Christmas and Happy Holidays. As our nation has and continues to persevere through recent tragedies, we remember the spirit of the victims and heroes. We are thankful for the many blessings we receive each and every day.



**enhancing
the quality of life
for our clients**

Engineering

- Water/Wastewater
- Sanitary
- Civil
- Structural
- Mechanical Process
- Lighting Design
- Instrumentation
- HVAC&R
- Electrical Power
- Surveying
- Plumbing Systems

Environmental

- Permitting
- Stormwater
- Assessments
- Brownfields
- Audits
- Landfills
- Air Pollution
- Industrial Hygiene
- Wetlands
- UST/AST
- Asbestos Abatement

Management

- Planning
- Construction Services
- Operations
- Health & Safety



PRE-SORTED STANDARD
U S POSTAGE PAID
KNOXVILLE TN
PERMIT # 488

Lamar Dunn & Associates, Inc.

www.ldassoc.com

CORPORATE OFFICE
3305 Maloney Road
Knoxville, Tennessee 37920
Telephone: (865) 573-7672
Fax: (865) 573-1352

With offices in Chattanooga, Nashville, and the Tri-Cities